



Statewide Sanitary Sewer Overflow (SSO) Reduction Program Review and Update

Jim Fischer, P.E.

Division of Water Quality / WDR Unit

State Water Resources Control Board

1001 I Street, 15th Floor, Sacramento, CA 95818

Slide 1

Overview

1. Program Goals
2. Background and History
3. Goals of Review and Update Process
4. Next Steps
5. Statewide Spill Data Summary
6. Statewide Implementation Activities
7. Program Contacts & Information

Slide 2

1. Program Goals

Slide 3

- Reduce Sanitary Sewer Overflows (SSOs) and the volume of sewage spilled statewide
- Protect public health, safety and the environment
- Timely notification for spill responders

Slide 4

2. Background and History

Slide 5

- Resolution No. **2004-0080** directed staff to develop statewide program to reduce SSOs
- Statewide SSO General Order **adopted May 2, 2006**
- Monitoring and Reporting Program (MRP) revised February 2008 to enhance early notification requirements
- Over 3 years experience implementing program

Slide 6

3. Goals of Review and Update Process

Slide 7

1. Improve performance of statewide SSO Reduction Program
2. Improve existing SSO General Order
3. Accurately capture stakeholder experiences, suggestions and comments in a transparent manner to help shape future staff proposal

Slide 8

4. Next Steps

Slide 9

1. Comments solicited from public meetings will be compiled and posted on SSO website
2. Staff will meet with Regional Boards to solicit input and draft new Order (to be circulated for public comment est. 12/2009)
3. State Water Board will hold a public workshop on staff proposal (est. early 2010)
4. Final staff proposal will be presented to State Water Board for adoption (est. mid 2010)

Slide 10

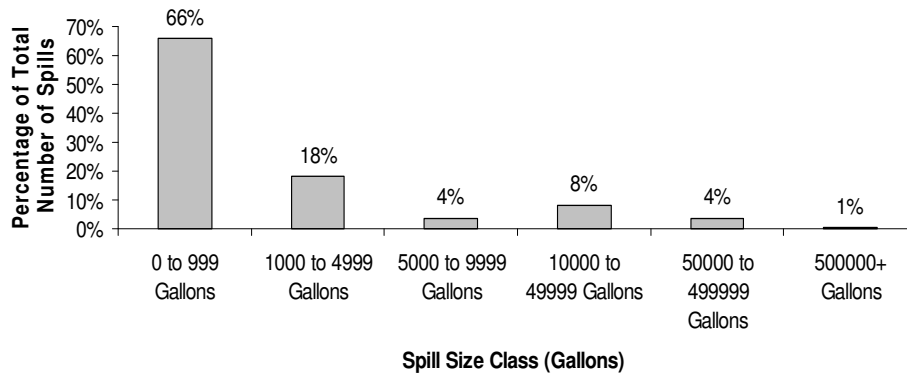
5. Statewide Spill Data Summary

Slide 11

1,917 SSO and PLSD spills reached surface waters since program inception

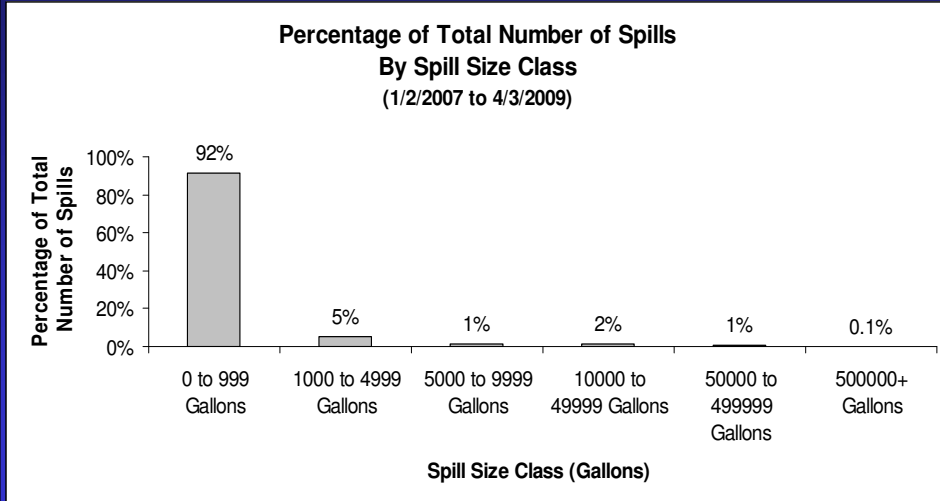
Percentage of Total Number of Spills Reaching Surface Water
By Spill Size Class

(Total = 1,917 Spills Reaching Surface Water, 1/2/2007 to 6/26/2009)



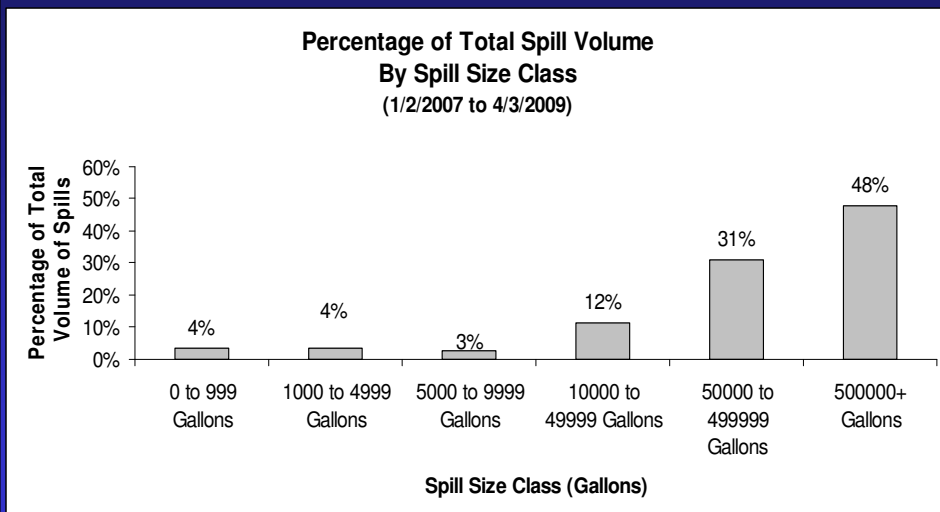
Slide 12

92% of all spills are less than 1,000 gallons and account for only 4% of volume spilled



Slide 13

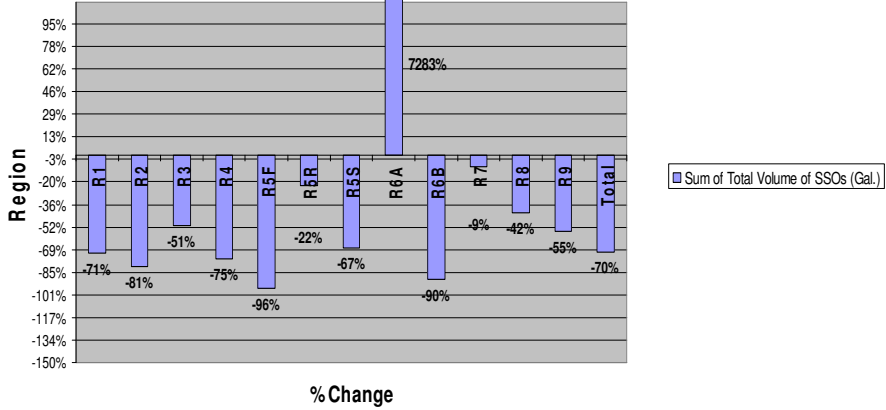
1.1% of spills are greater than 50,000 gallons and account for 79% of volume spilled



Slide 14

Overall Program Performance

% Change - FY 2007/2008 to 2008/2009
Sum of Total Volume of SSOs (Gal.)



Spill Incident Maps

- Provides geospatial presentation of certified SSO and Private Lateral spills
- Helps Water Boards fulfill mandates to make sewage spill maps available to the public using GIS wherever possible
- Released to public May 2009 (version 1)

Slide 17

Spill Incident Maps

The screenshot displays the 'Sanitary Sewer Overflow (SSO) Incident Map' web application. The map shows California with numerous pink and red markers indicating spill incidents. The interface includes a navigation menu on the left, a search bar, and filter options on the right for volume and date. The browser window title is 'State Water Resources Control Board Sanitary Sewer Overflow (SSO) Incident Map - DRAFT ** DRAF - Windows Internet Explorer pro'.

Sanitary Sewer Overflow (SSO) Incident Map

Background Map

Filter by volume (gallons):
0 - 1,000,000+ gal.

Minimum: 0
Maximum: 1,000,000+
Set Volume

Filter by date:
03/22/2009 - 04/22/2009

Start: March 22, 2009
End: April 22, 2009
Set Dates

RESOURCES

- Email Subscriptions
- Data & Databases
- Business Help
- Public Records Center
- Grants & Loans
- Fees
- File an Environmental Complaint
- Employment
- Useful Links
- Website Index

6. Statewide Implementation Activities

Slide 19

Initial areas of implementation:

1. Enrollment for Coverage (~1,100 systems)
2. Online SSO Data System (California Integrated Water Quality System, CIWQS)
3. Outreach and Education

Current areas of implementation:

1. Compliance and Enforcement
2. Collection System Audits
 - targeted and random conducted with staff from Regional Water Boards

Slide 20

Appendix 4

**Statewide Sanitary Sewer Overflow
Reduction Program
Annual Compliance Report**



(available for download on State Water Board SSO website)

Slide 21

Target Areas for Compliance

- **Enrollment for Coverage:** applicable dischargers failing to enroll for coverage under the SSO General Order
- **SSO Monthly Reporting:** enrollees failing to report monthly SSOs or execute required monthly “No Spill Certifications”
- **SSMP CIWQS Certification (time schedule):** enrollees failing to comply with the CIWQS certification for all SSMP elements
- **Collection System Questionnaire:** enrollees failing to complete and annually update required Collection System Questionnaire
- **SSMP Completeness:** completeness of individual SSMP elements
- **Reporting Accuracy:** evaluate accuracy of enrollee reporting
- **SSO Spill Enforcement:** assist Regional Water Boards with follow-up spill enforcement actions and investigations

Slide 22

Statewide Compliance Summary

- CIWQS Monthly Reporting Compliance (Spill Reporting / No Spill Certifications) ~ **61%**
- SSMP Certification Compliance ~ **50%**
- Collection System Questionnaire Compliance ~ **85%**

Slide 23

Statewide Compliance and Enforcement Plan

- Discusses details of State and Regional Board work activities to help improve statewide compliance over next 12 months
- Public release 11/09 (est.)

Slide 24

2009-2010 Compliance Goals

- SSO Reporting: current = 61% **target 85%**
- SSMP CIWQS Certification: current = 50% **target 75%**
- Collection System Question: current = 85% **target 95%**
- SSMP Completeness: **target 24 statewide audits**
- Reporting Accuracy: **target 24 statewide audits**
- SSO Spill Enforcement: **target increase by 25%**

Slide 25

Program Contacts & Information

Jim Fischer, P.E.

SSO Review and Update
Audits: northern California

916-341-5548

jfischer@waterboards.ca.gov

Russell Norman, P.E.

Data & SSO User Group
Audits: southern California

916-323-5598

rnorman@waterboards.ca.gov

SSO Main Website:

http://www.waterboards.ca.gov/water_issues/programs/sso/index.shtml

List Serve Sign-Up:

http://www.waterboards.ca.gov/resources/email_subscriptions/swrcb_subscribe.shtml

Slide 26